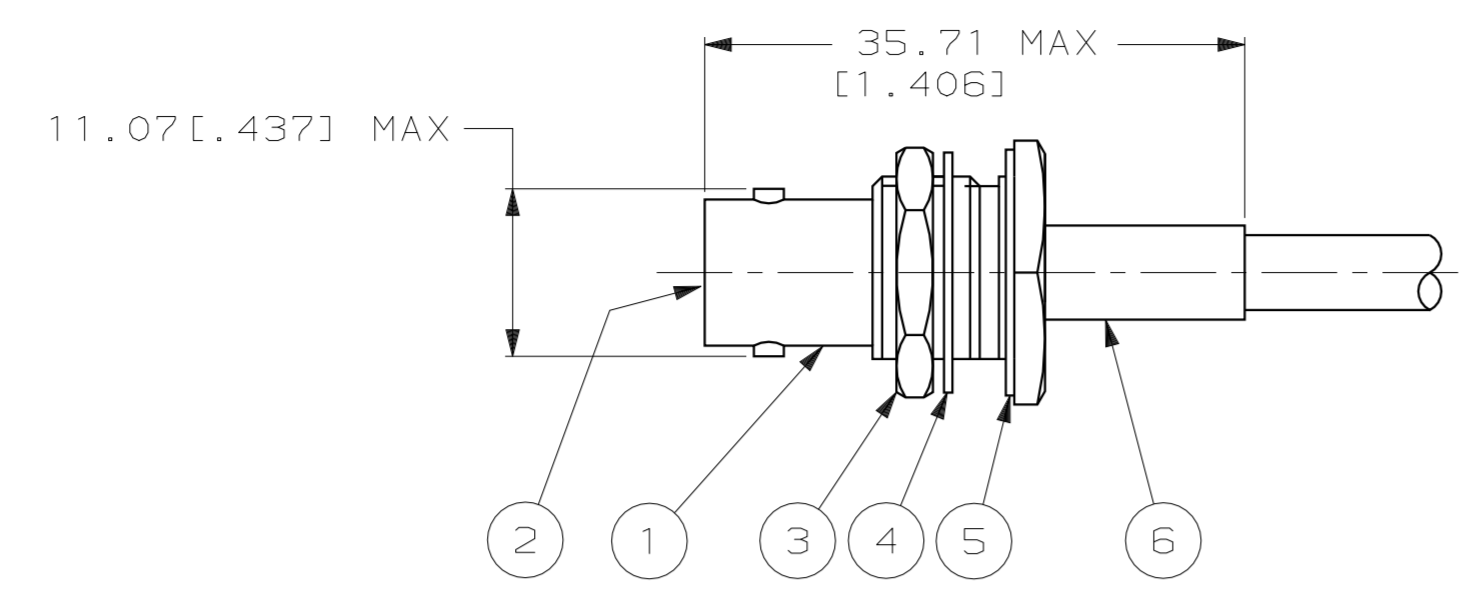
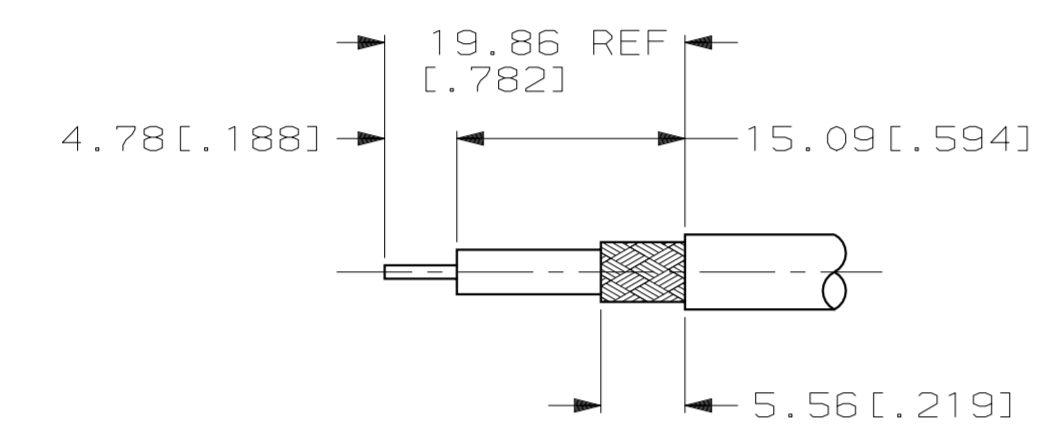


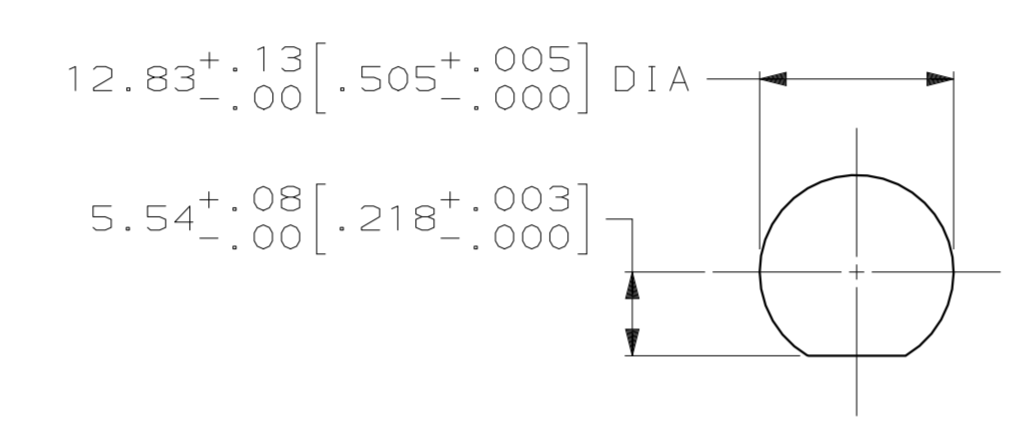
LOC		DIST		P		ZONE		LTR		REVISIONS		DATE	APPD
DF	X0									DESCRIPTION			
										U REV PER ECO 06-20590 CT		8-29-06	BM



1. MAX PANEL THICKNESS: 6.10 [1.240]
2. SEE I.S. 1914-3



RECOMMENDED STRIP LENGTH



SUGGESTED PANEL CUTOUT

	220009-1	RG-174/U & 188/U	TYCO 6-331693-2	-	21427-4	9-329631-0	9-329632-0	329633	1883188-1	1-331368-2	1883623-1	6-331693-2
OBSOLETE	69477-2	TWISTED PAIR (SPECIAL)	-	-	21427-4	1-329631-2	1-329632-2	329633	2-329461-7	3-331368-9	227461-1	3-331693-0
OBSOLETE	69477-1	RG-174/U	AMP & 2-331693-9	-	-	329631	329632	329633	50428-1	1-331368-2	1-331786-0	2-331693-9
OBSOLETE	69477-2	IBM 5353914 & BRAND REX T209	-	226171-2	-	1-329631-2	1-329632-2	329633	2-329049-4	2-331368-2	227461-1	2-331693-8
OBSOLETE	69477-2	RAYCHEM 7524A1312	AMP & 2-331693-7	-	-	329631	329632	329633	329461	2-331368-3	1-331786-1	2-331693-7
OBSOLETE	69477-2	TWISTED PAIR (SPECIAL)	AMP & 2-331693-6	-	21427-4	329631	329632	329633	329461	2-331368-3	1-331786-1	2-331693-6
OBSOLETE	69477-2	IBM 5353914 & BRAND REX T209A	-	226171-2	-	329631	329632	329633	2-329049-1	2-331368-2	1-331786-7	2-331693-5
SUPERSEDED BY 225398-6	69478-1	RG-142/U, 142A/U & 142B/U	00779 M39012/19B0006 YY WW	-	-	1-329631-9	329632	329633	329099	2-331369-4	331786	1-331693-8
SUPERSEDED BY 225398-3	69478-1	RG-55/U, 55A/U, 55B/U & 223/U	00779 M39012/19B0004 YY WW	-	-	1-329631-9	329632	329633	329099	2-331369-3	331786	1-331693-6
SUPERSEDED BY 225398-9	69477-2	RG-180/U, 180A/U & 195/U	AMP & 1-331693-4	-	-	329631	329632	329633	329461	1-331368-4	1-331786-1	1-331693-4
SUPERSEDED BY 225398-8	220009-1	RG-179/U & 187/U	AMP & 1-331693-3	-	21427-4	329631	329632	329633	2-328666-3	1-331368-4	1-331786-1	1-331693-3
	220009-1	RG-174/U & 188/U	AMP & 1-331693-2	-	21427-4	329631	329632	329633	2-328666-3	1-331368-2	1-331786-1	1-331693-2
	69478-1	RG-58/U, 58A/U, 58B/U & 58C/U	00779 M39012/19B0003 YY WW	-	-	1-329631-9	329632	329633	50427-1	2-331369-3	331786	1-331693-1
	69477-2	AMPHENOL 21-597	AMP & 1-331693-0	-	-	329631	329632	329633	329461	1-331368-2	1-331786-1	1-331693-0
OBSOLETE	69477-1	RG-59/U, 59A/U, 59B/U, 62/U, 62A/U & 62B/U	00779 M39012/19B0007 YY WW	-	-	1-329631-9	329632	329633	50428-1	3-331368-9	1-331786-0	331693
	USE CRIMPING TOOL	FOR USE WITH CABLE	STAMPING	⑧ TUBING QTY=1	⑦ BUSHING QTY=1	⑥ JAM NUT QTY=1	⑤ LOCK WASHER QTY=1	④ GASKET QTY=1	③ FERRULE QTY=1	② CONTACT QTY=1	① JACK ASSY QTY=1	ASSY NO

DO NOT SCALE PRINT. UNLESS SPECIFIED DIMENSIONS IN mm [INCHES] TOLERANCES ON:		DR 5-7-90 P. ALSEDEK		AMP Incorporated Harrisburg, PA 17105-3608	
2 PLC DEC ± -		CHK 9/6/90 R.E. RUTH			
3 PLC DEC ± .41(1.016)		APPD 9/20/90 M. PHILLIPS		NAME	
ANGLES ± -		APPD 9/20/90 R.E. RUTH		JACK, BULKHEAD, DUAL CRIMP, BNC	
MATERIAL		PRODUCT SPEC 108-12020		DRAWING NO 331693	
FINISH		APPLICATION SPEC		SIZE D	
				CAGE CODE 00779	
				DRAWING NO 331693	
				SCALE 2:1	
				SHEET 1 OF 1	